

## Collect data and Plot graphs software "Visco-chart"

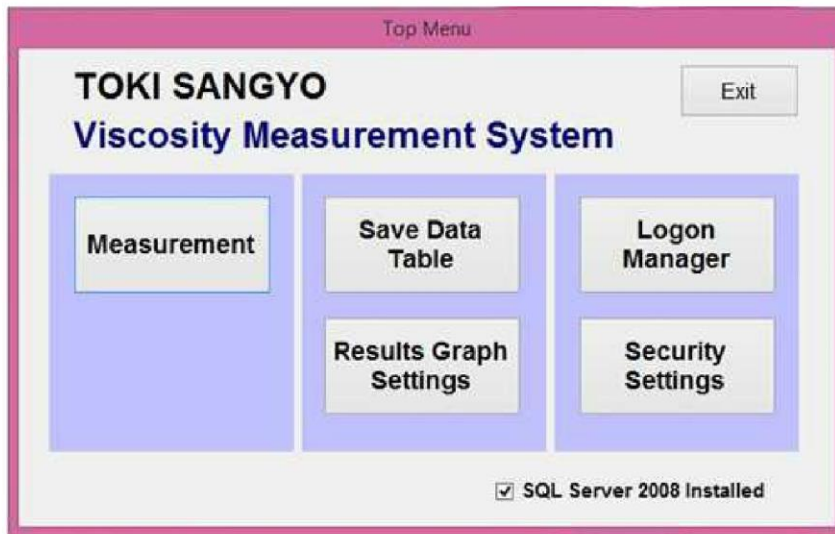
Visco-Chart is a proprietary software developed by Toki Sangyo Co. Ltd for use with Toki Sangyo viscometers. Visco-Chart is a data retrieval and graph generating software. Visco-Chart fetches data output from the viscometer, creates graphs, saves data, and reproduces saved files as well as performs simple analysis. This software can also be provided with a security function and database function.

### Features

- ◆ Simple operation
- ◆ Real time graph creation.
- ◆ Up to 7 types of graphs can be generated.
  - Viscosity (mPa·s) – Meas. Time (sec)
  - %Torque (%) – Meas. Time (sec)
  - Viscosity (mPa·s) – Speed (rpm)
  - Viscosity (mPa·s) – Shear rate (1/sec) (for cone plate)
  - Shear stress (Pa) – Shear rate (1/sec) (for cone plate)
  - Viscosity (mPa·s) – Temperature (°C) (for TPE-100 or TD-100)
  - Temperature (°C) – Meas. Time (sec) (for TPE-100 or TD-100)
- ◆ Data can be saved in csv and text formats.
- ◆ Analysis and printout of saved data.
- ◆ Automatic retrieval stop function based on viscosity value or time.
- ◆ TI value calculation function (in program mode)
- ◆ Simple report (Final data) output function.
- ◆ Security function
  - Security function can be incorporated by installing SQL Server 2008 Express,
    - User registration function allows log-in only by registered users.
    - Individual access authority setting for each registered user.
- ◆ Database function
  - Database of collected data can be compiled and saved by installing SQL Server 2008 Express.

The security function and database function used with SQL Server 2008 Express is only available with Windows 7 or Windows 8.

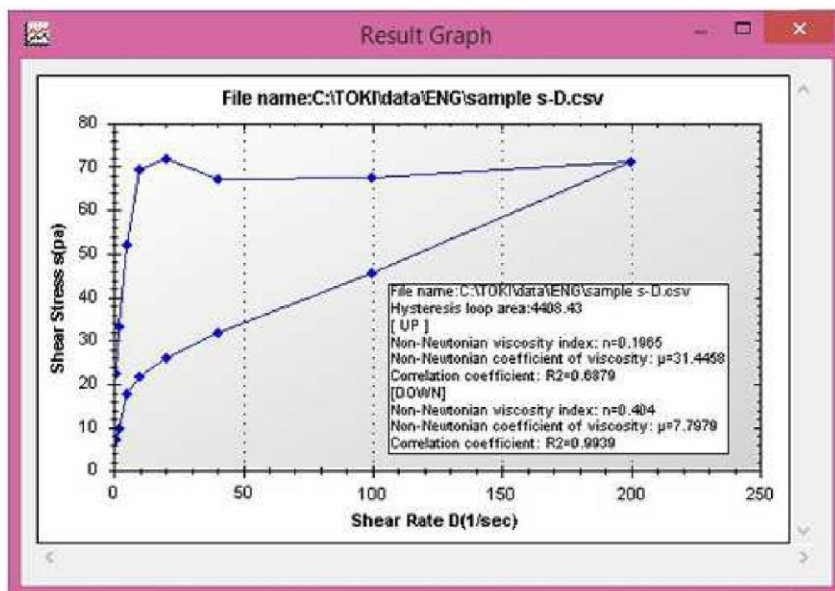
■ Top menu



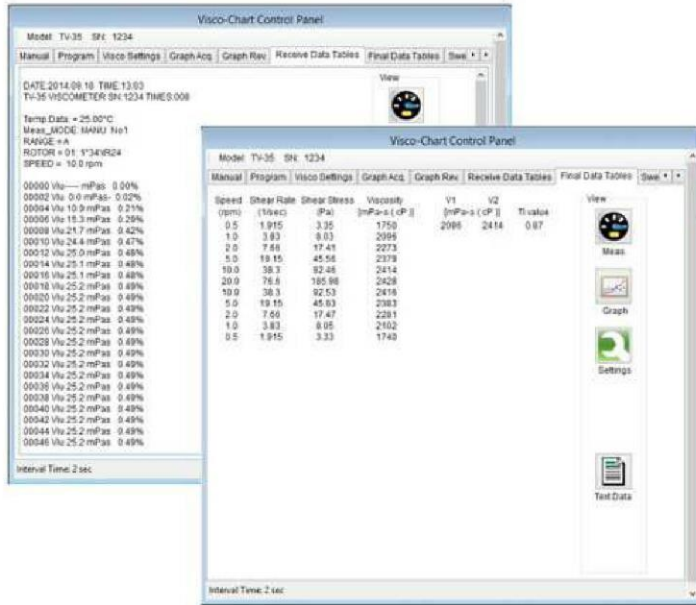
■ Measurement screen



■ Generated graph



■ Text data screen



■ Security function

Logon

**TOKI SANGYO**  
**Viscosity Measurement System**

User ID:  Logon

Password:  Cancel

anager

(input 30 characters or less)

(input 30 characters or less)

\* User ID:  (input 8 characters or less)

\* Password:  (input 8 characters or less)

Administrator authorization

User Name	Dept.	User ID	Password	Administrator authorization
admin		admin	admin	<input checked="" type="checkbox"/>
Toke Taro	Production	TOKI	TOKI	<input type="checkbox"/>

Top Menu

New

Delete

Save

■ Database function

Save Data Table

Data (2)

Filters: ID:  Operator:  Dept:  Search Details Refresh Export Top Menu

ID	Operator	Dept.	Date	Comment	File Name	Folder Name
1	Sample Data1	Production	9/12/2014 10:00	Sample Data-nH	sample-nH.csv	C:\OKIdata\ENQ
3	Sample Data2	Production	9/12/2014 10:3	Sample Data-nI	sample-nI.csv	C:\OKIdata\ENQ
4	Sample Data3	Production	9/12/2014 11:3	Sample Data-nJ	sample-nJ.csv	C:\OKIdata\ENQ

File Information

\* ID:  (input 10 characters or less)

\* Date:  (input 14 characters or less)

\* Operator:  (input 30 characters or less)

\* Dept:  (input 30 characters or less)

Reference File

File Name:

Folder Name:

Comment:  (input 100 characters or less)

Save Data Table

Edit

New

Delete

Reset

Results Graph

Settings

Print

ID	Operator	Dept.	Comment	Date	File Name	Folder Name
1	Sample Data1	Production	Sample Data	9/12/2014 10	sample-nH	C:\OKIdata\ENQ