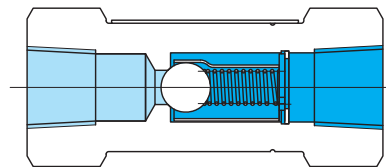


In-line type check valves DT8P1, 10 series



- Simple installation can be used as a pipe coupling.
- For low pressure lines.

Functional Symbol



Model Code

DT8P1-06-5-11-JA-(S22)-J

1 2 3 4 5

1 In-line type check valves (threaded connection)

2 Size

Refer to "Specifications".

3 Cracking pressure

Refer to "Specifications".

4 Design no.

10: DT8P1-02, 03

11: DT8P1-06, 10, 12

5 Special feature

S22: no spring type

Specifications

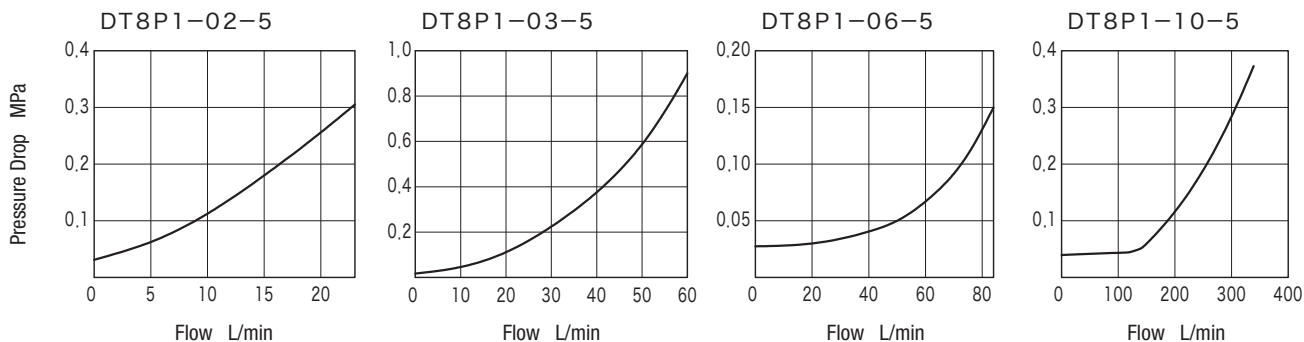
Model Code	Size	Max. Working Pressure MPa	Rated Flow L/min	Weight kg
DT8P1-02	02	21	20	0.2
DT8P1-03	03		40	0.2
DT8P1-06	06		80	0.7
DT8P1-10/12	10/12		200	2.3

Code	5	15	20	25	30	50	65	125
Cracking Pressure MPa	0.035	0.11	0.14	0.18	0.21	0.35	0.46	0.88

Note: Some cracking pressures may not be applicable for certain sizes. See F2-2 Spring Table.

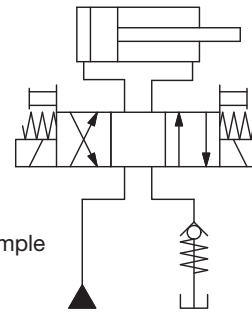
Characteristics Curve (at 20 mm²/s) (typical examples)

Pressure Drop Characteristics (cracking pressure 0.035 MPa)



Notes on Operation

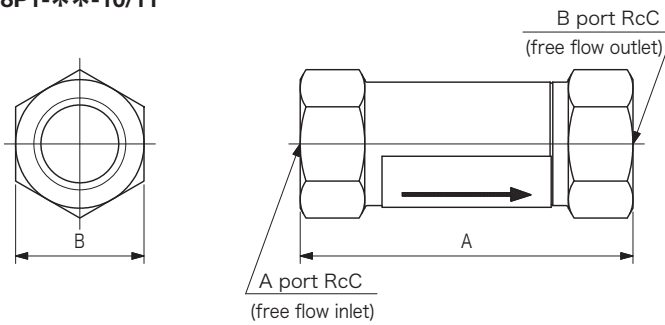
- Use these valves only in the kind of low-pressure lines shown in the circuit example or in cases where the static pressure is to be stopped even under high pressure.
- The valves cannot be used for high-pressure lines. Use design no. 20 instead.
- The valves cannot be used for water-glycol based fluids. Use design no. 20 instead.
- Mount S22 (no spring) type so A port is at bottom (free flow inlet).



DT8P1 Application Example

Dimensions

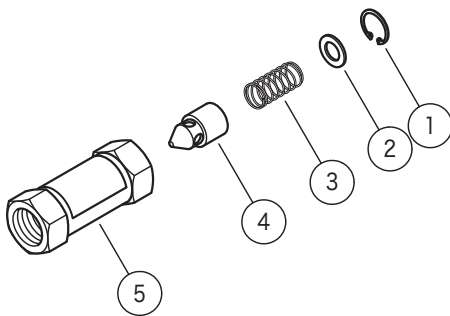
DT8P1-**-10/11



Model Code	C	A	B
DT8P1-02-**-10-JA-J	1/4	57.1	22
DT8P1-03-**-10-JA-J	3/8	76.2	25.4
DT8P1-06-**-11-JA-J	3/4	98.4	38
DT8P1-10-**-11-JA-J	1-1/4	133.4	63
DT8P1-12-**-11-JA-J	1-1/2	133.4	63

Construction

③ Spring



DT8P1-02	
Code	Part No.
5	VP113559
15	40016779
50	40022160
65	40031356

DT8P1-03	
Code	Part No.
5	VP123761
20	40015761
30	VA12224
65	VP123760

DT8P1-06	
Code	Part No.
5	VP125779
15	VA15935
20	VA11721
30	VA14342
50	VA28508
65	VP125780
125	VA10383

DT8P1-10/12	
Code	Part No.
5	VP125631
15	VA16021
20	VA11722
25	VA11490
30	VA11571
50	40031682
65	VP125632