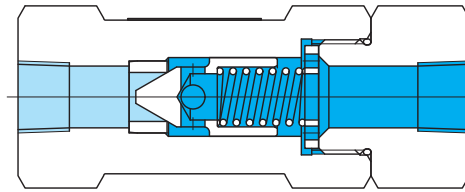


In-line type check valves DT8P1, 20 series



- Simple installation can be used as a pipe coupling.

Functional Symbol



Model Code

(F3)-DT8P1-06-5-JA-20-(S22)-J

1

2

3

4

5

6

1 Hydraulic fluid

Omit: mineral oil based fluid, water-glycol based fluid
F3: phosphate ester

2 In-line type check valves (threaded connection)

3 Size

Refer to "Specifications".

4 Cracking pressure

Refer to "Specifications".

5 Design no. (See Notes on Operation)

6 Special feature

S22: no spring type

Specifications

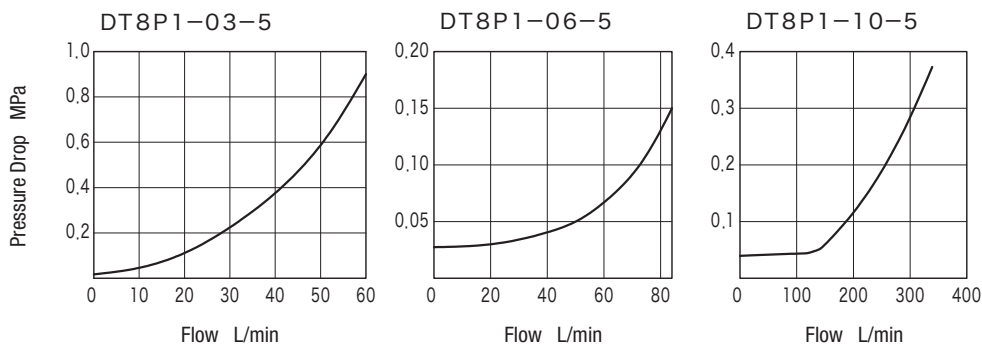
Model Code	Size	Max. Working Pressure MPa	Rated Flow L/min	Weight kg
DT8P1-03	03	21	40	0.5
DT8P1-04/06	04/06		80	1.6
DT8P1-08/10	08/10		200	4.0

Code	5	15	20	25	30	50	65	125
Cracking Pressure MPa	0.035	0.11	0.14	0.18	0.21	0.35	0.46	0.88

Note: Some cracking pressures may not be applicable for certain sizes. See F2-2 Spring Table.

Characteristics Curve (at 20 mm²/s) (typical examples)

Pressure Drop Characteristics (cracking pressure 0.035 MPa)

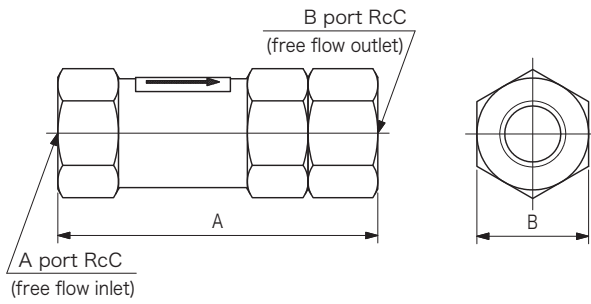


Notes on Operation

- Mount S22 (no spring) type so A port is at bottom (free flow inlet).

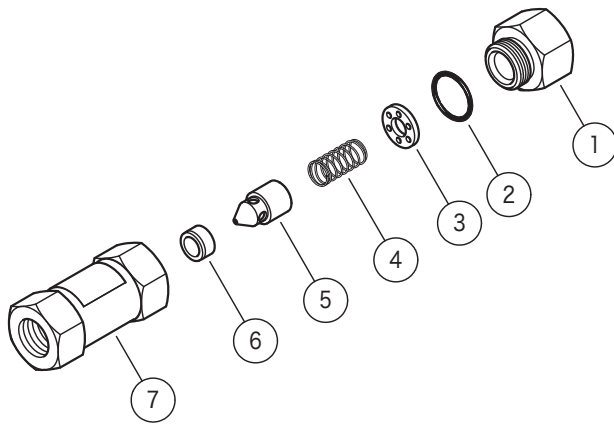
Dimensions

DT8P1-**-20



Model Code	C	A	B
DT8P1-03-**-JA-20-J	3/8	93	32
DT8P1-04-**-JA-20-J	1/2	131.7	46
DT8P1-06-**-JA-20-J	3/4		
DT8P1-08-**-JA-20-J	1	178	67
DT8P1-10-**-JA-20-J	1-1/4		

Construction



④ Spring

DT8P1-03

Code	Part No.
5	VP123761
20	40015761
30	VA12224
65	VP123760

DT8P1-04/06

Code	Part No.
5	VP125779
15	VA15935
20	VA11721
30	VA14342
50	VA28508
65	VP125780
125	VA10383

DT8P1-08/10

Code	Part No.
5	VP125631
15	VA16021
20	VA11722
25	VA11490
30	VA11571
50	40031682
65	VP125632

② O-ring

Model Code	Part No.	Standard	Qty
DT8P1-03	007990819	AS568-908 (NBR, Hs90)	1
DT8P1-04/06	007991619	AS568-916 (NBR, Hs90)	1
DT8P1-08/10	007992419	AS568-924 (NBR, Hs90)	1