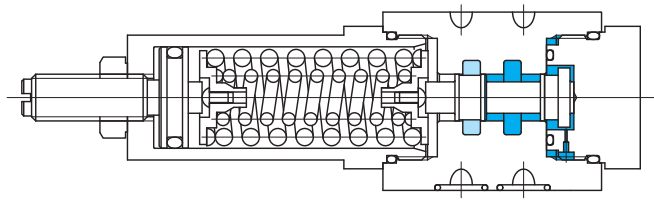
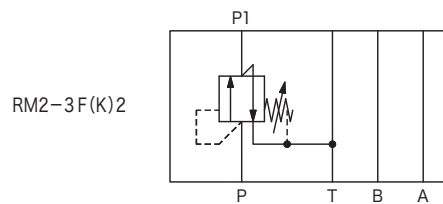
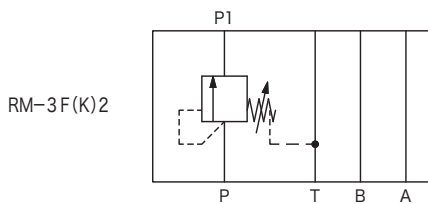


Flui-trol pressure sequence valves RM(2)



Functional Symbols



Model Code

(F3)-RM(2)-3F(K)2-30-JA

1 2 3 4 5 6 7

- 1 Hydraulic fluid
Omit: mineral oil based fluid, water-glycol based fluid
F3: phosphate ester
- 2 Direct acting pressure control valve (P line control sequence valve)
- 3 Secondary side venting
Omit: no vent (standard)
2: secondary side vented to tank line below setting pressure

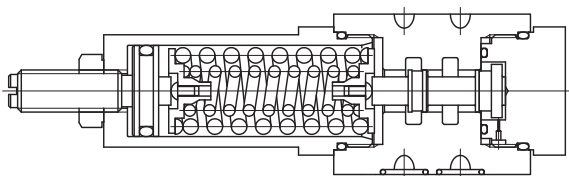
- 4 Pressure adjustment range
F: 0.35~14 MPa
- 5 Adjuster
Omit: slotted pressure adjustment screw
K: knob
- 6 Pilot and drain
2: P line self-pressure control/T line drain
- 7 Design no.

Specifications

Model Code	Max. Working Pressure MPa	Rated Flow L/min	Pressure Adjustment Range MPa	Weight kg
RM(2)-3F	14	11.3	0.35~14	0.7

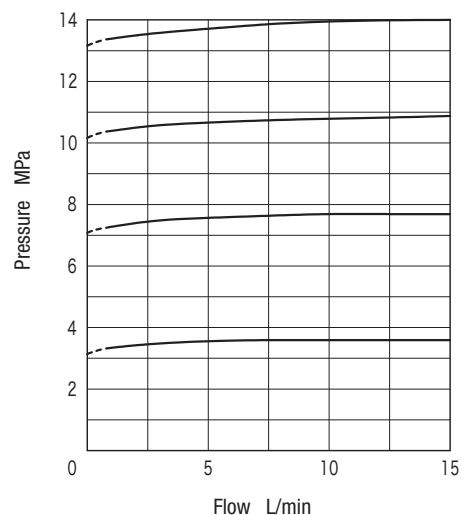
Notes on Operation

- With RM2, when pressure is below setting, delivery side of P line (P1) will vent to tank line (T), so the pressure on the P1 side cannot be maintained.

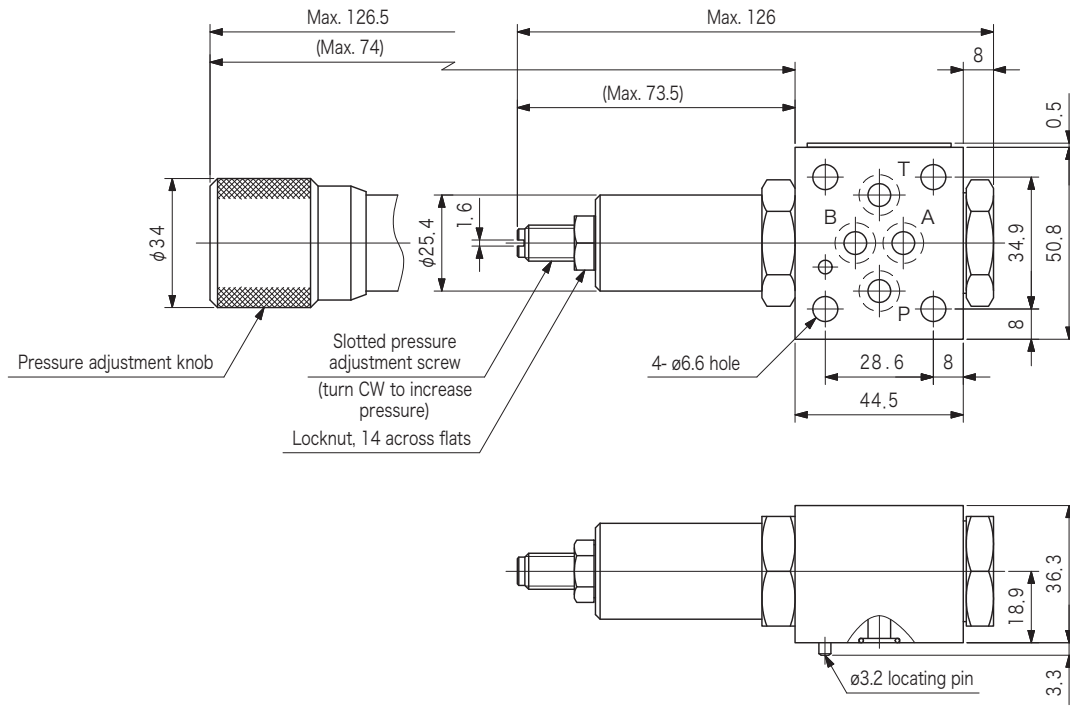


Characteristics Curve (at 20 mm²/s) (typical examples)

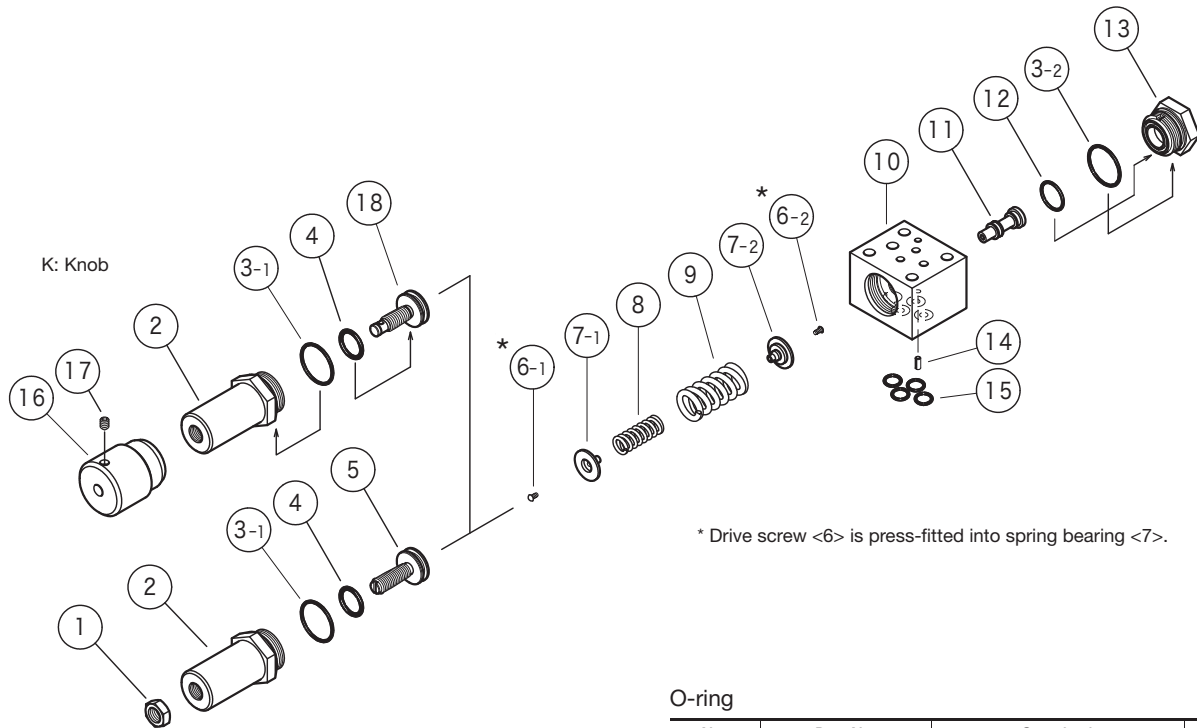
Flow-Pressure Characteristics



Dimensions



Construction



Omitted for slotted pressure adjustment screw

O-ring

No.	Part No.	Standard	Qty
3	007902119	AS568-021 (NBR, Hs90)	2
4	007911417	AS568-114 (NBR, Hs70)	1
12	007901617	AS568-016 (NBR, Hs70)	1
15	007901117	AS568-011 (NBR, Hs70)	4