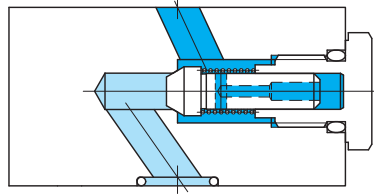
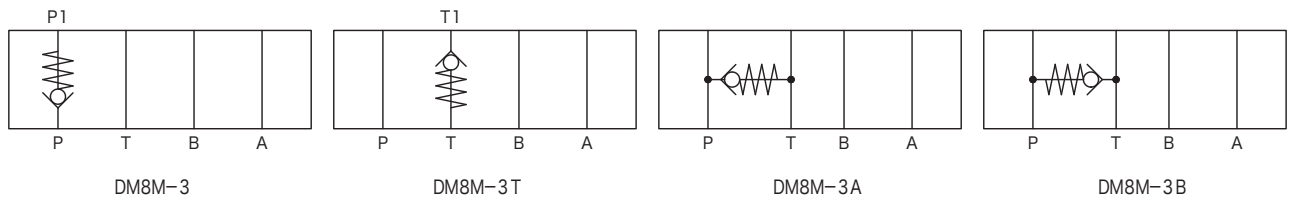


Flui-trol direct check valves DM8M



Functional Symbols



Model Code

(F3)-DM8M-3(T)-15-30-JA

1 2 3 4 5

- 1 Hydraulic fluid
Omit: mineral oil based fluid, water-glycol based fluid
F3: phosphate ester
- 2 Check valves
- 3 Check valve control line (see schematic codes)
Omit: P line
A: P → T
B: T → P
T: T line

- 4 Cracking pressure
15: 0.1 MPa
- 5 Design no.

Specifications

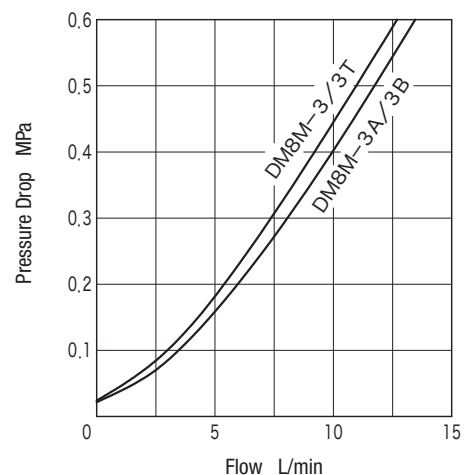
Model Code	Max. Working Pressure MPa	Rated Flow L/min	Cracking Pressure MPa	Weight kg	
				DM8M-3 DM8M-3T	DM8M-3A DM8M-3B
DM8M	14	9	0.1	0.4	0.3

Notes on Operation

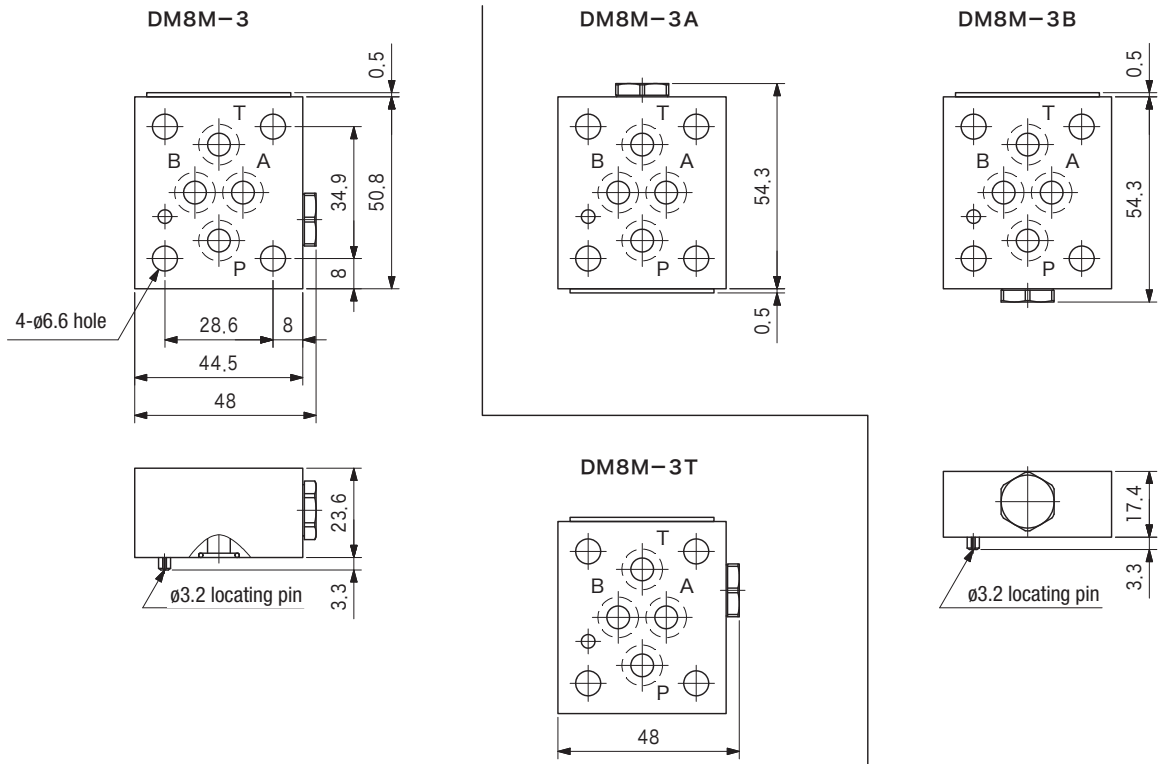
- Type 3A, 3B valves should be mounted below reducing valve XG1 and pressure control valve RG(2) and used as bypass check valve.

Characteristics Curve (at 20 mm²/s) (typical examples)

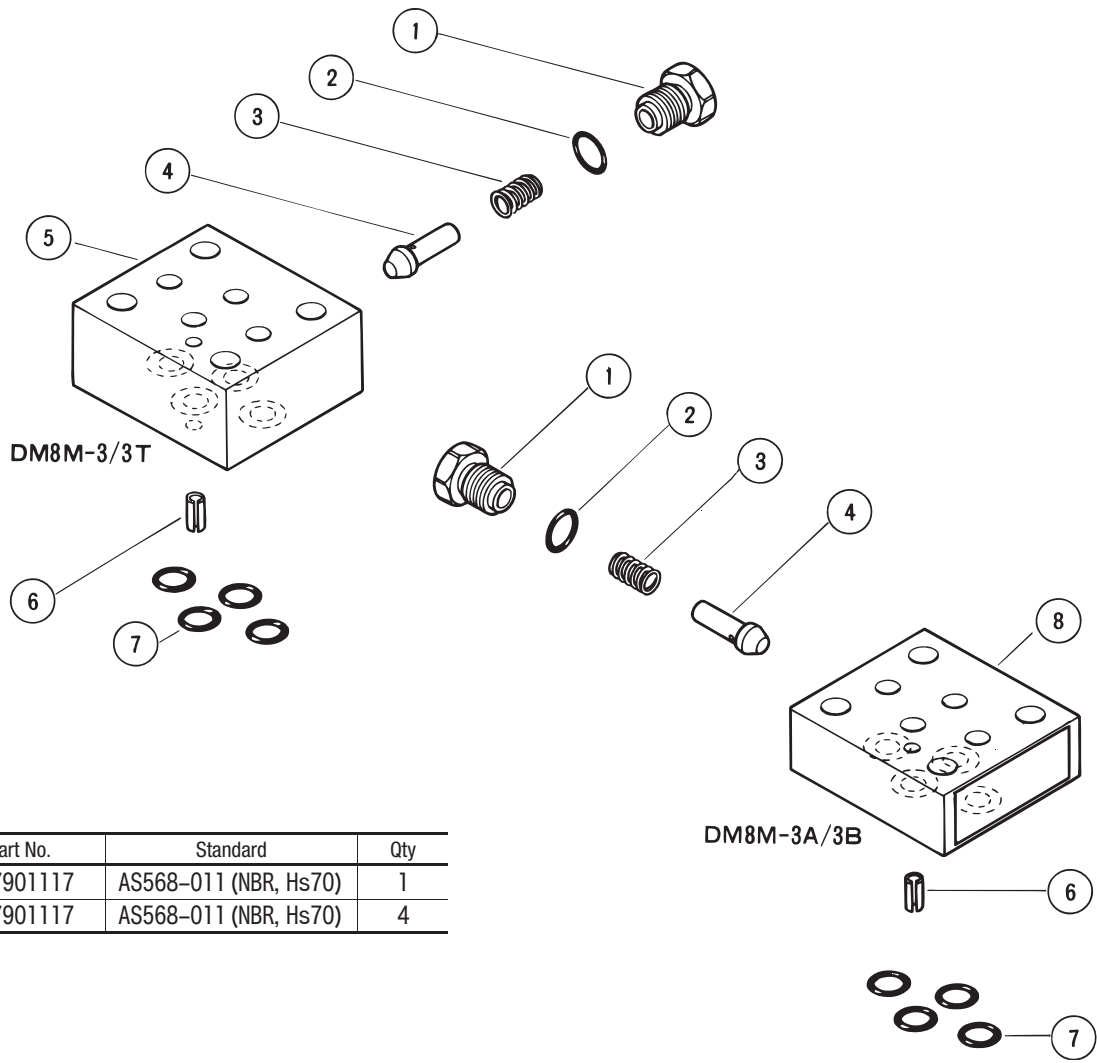
Pressure Drop Characteristics



Dimensions



Construction



O-ring

No.	Part No.	Standard	Qty
2	007901117	AS568-011 (NBR, Hs70)	1
7	007901117	AS568-011 (NBR, Hs70)	4