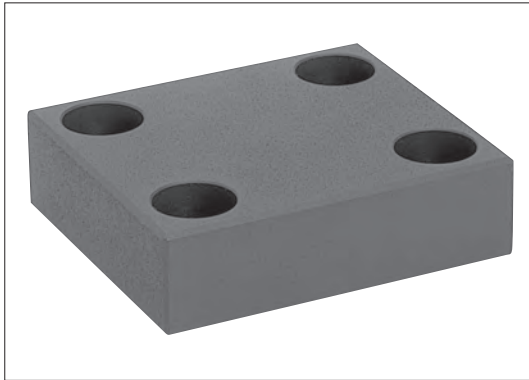
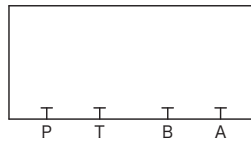


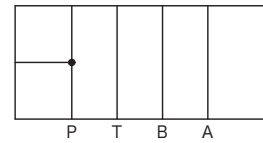
# Flui-trol adaptor plates DGB, DGC, XAM



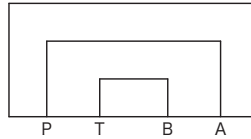
## Functional Symbols



DGB-3



XAM-02



DGC-3

## Model Code

(F3)-DGB-3-30-JA

1 2 3

- 1 Hydraulic fluid  
Omit: mineral oil based fluid, water-glycol based fluid  
F3: phosphate ester
- 2 Adaptor plate  
DGB: blanking plate  
DGC: crossover plate (P → A, B → T)
- 3 Design no.

(F3)-XAM-02-JA-20-J

1 2 3 4

- 1 Hydraulic fluid  
Omit: mineral oil based fluid, water-glycol based fluid  
F3: phosphate ester
- 2 Tapping (gauge port) plate (P line)
- 3 Connection port diameter (tapered pipe thread)  
02: Rc 1/4
- 4 Design no.

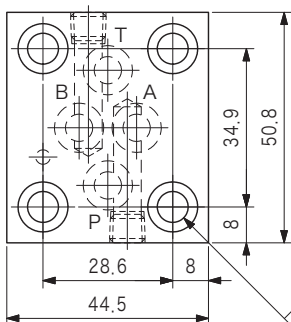
## Specifications

Model Code	Max. Working Pressure MPa	Weight kg
DGB-3-30-JA	14	0.3
DGC-3-30-JA		0.25

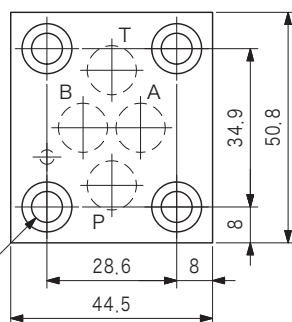
Model Code	Max. Working Pressure MPa	Weight kg
XAM-02-JA-20-J	14	0.6

## Dimensions

DGC-3



DGB-3



XAM-02

